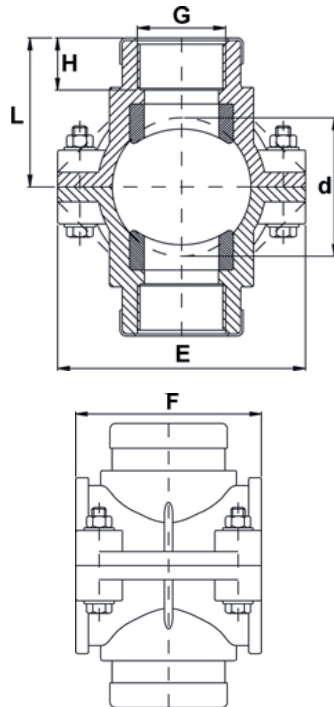


UNIDELTA
Anbohrschellen IG
mit
Verstärkung
PN16 (blau)



Körper: PP
Überwurfmutter: PP
Dichtung: Nitrilkautschuk
Klemmring: Polyacetal
Druckring: PP
Verstärkungsring aus rostfreiem Stahl (nur bei IG ab 1 1/4")
Schrauben: galvanisierter Stahl

Betriebsdruck bei 20°C:
d16 - d110 PN16
Anbohrschellen:
PN10 (schwarz) PN16 (blau)
Betriebstemperatur:
PP - max. 100°C
Polyacetal - max. 80°C
PVC - max. 60°C
(bei entsprechendem reduziertem Betriebsdruck)

Bezugsnormen:
Fittings u. Anbohrschellen:
UNI 9561, UNI 9562,
DIN 8076-3, ISO 14236,
ISO 14360
Gewinde:
ISO 7/1, DIN 2999, BS21
Flansche:
UNI 2278, DIN 8063

Qualitätssicherung:
UNI EN ISO 9001:2008
Zulassungen:
DVGW DW-8616AU2045
Prüfberichte:
MO 001A TZW
KR194/08 TZW
KO 07 1292 MPD

| d x G | Artikel-Nr. | Schrauben | Pack | L | H | E | F | PN |
|--------------|----------------|-----------|------|-----|----|-----|-----|----|
| 20 x 1/2" | 271-6186020048 | 2 | 30 | 45 | 25 | 80 | 54 | 16 |
| 25 x 1/2" | 271-6186025048 | 2 | 30 | 37 | 19 | 80 | 54 | 16 |
| 25 x 3/4" | 271-6186025068 | 2 | 30 | 43 | 22 | 80 | 54 | 16 |
| 32 x 1/2" | 271-6186032048 | 4 | 80 | 52 | 24 | 80 | 64 | 16 |
| 32 x 3/4" | 271-6186032068 | 4 | 80 | 46 | 18 | 80 | 64 | 16 |
| 40 x 1/2" | 271-6186040048 | 4 | 55 | 51 | 17 | 87 | 74 | 16 |
| 40 x 3/4" | 271-6186040068 | 4 | 55 | 53 | 20 | 87 | 74 | 16 |
| 40 x 1" | 271-6186040088 | 4 | 55 | 60 | 21 | 87 | 74 | 16 |
| 50 x 1/2" | 271-6186050048 | 4 | 35 | 65 | 24 | 102 | 78 | 16 |
| 50 x 3/4" | 271-6186050068 | 4 | 35 | 66 | 26 | 102 | 78 | 16 |
| 50 x 1" | 271-6186050088 | 4 | 35 | 65 | 24 | 102 | 78 | 16 |
| 63 x 1/2" | 271-6186063048 | 4 | 25 | 70 | 24 | 116 | 88 | 16 |
| 63 x 3/4" | 271-6186063068 | 4 | 25 | 86 | 23 | 116 | 88 | 16 |
| 63 x 1" | 271-6186063088 | 4 | 25 | 58 | 20 | 116 | 88 | 16 |
| 63 x 1 1/4" | 271-6186063108 | 4 | 25 | 70 | 26 | 116 | 88 | 16 |
| 63 x 1 1/2" | 271-6186063128 | 4 | 25 | 63 | 28 | 116 | 88 | 16 |
| 75 x 1/2" | 271-6186075048 | 4 | 20 | 81 | 25 | 130 | 88 | 16 |
| 75 x 3/4" | 271-6186075068 | 4 | 20 | 81 | 26 | 130 | 88 | 16 |
| 75 x 1" | 271-6186075088 | 4 | 20 | 80 | 26 | 130 | 88 | 16 |
| 75 x 1 1/4" | 271-6186075108 | 4 | 20 | 81 | 26 | 130 | 88 | 16 |
| 75 x 1 1/2" | 271-6186075128 | 4 | 20 | 80 | 26 | 130 | 88 | 16 |
| 75 x 2" | 271-6186075168 | 4 | 20 | 84 | 30 | 130 | 88 | 16 |
| 90 x 1/2" | 271-6186090048 | 4 | 20 | 90 | 25 | 150 | 88 | 16 |
| 90 x 3/4" | 271-6186090068 | 4 | 20 | 90 | 27 | 150 | 88 | 16 |
| 90 x 1" | 271-6186090088 | 4 | 20 | 90 | 27 | 150 | 88 | 16 |
| 90 x 1 1/4" | 271-6186090108 | 4 | 20 | 90 | 24 | 150 | 88 | 16 |
| 90 x 1 1/2" | 271-6186090128 | 4 | 20 | 90 | 30 | 150 | 88 | 16 |
| 90 x 2" | 271-6186090168 | 4 | 20 | 90 | 29 | 150 | 88 | 16 |
| 110 x 1/2" | 271-6186110048 | 6 | 10 | 100 | 24 | 175 | 107 | 16 |
| 110 x 3/4" | 271-6186110068 | 6 | 10 | 100 | 27 | 175 | 107 | 16 |
| 110 x 1" | 271-6186110088 | 6 | 10 | 100 | 25 | 175 | 107 | 16 |
| 110 x 1 1/4" | 271-6186110108 | 6 | 10 | 100 | 26 | 175 | 107 | 16 |
| 110 x 1 1/2" | 271-6186110128 | 6 | 10 | 105 | 30 | 175 | 107 | 16 |
| 110 x 2" | 271-6186110168 | 6 | 10 | 105 | 30 | 175 | 107 | 16 |

Irrtümer und technische Änderungen vorbehalten